



**THE
HEALTH
of LEE
COUNTY
2009**




*education crime income
labor economy quality of life
INDUSTRY the arts poverty
transportation retail sales*

Charles Hayes
President & CEO
Research Triangle
Regional Partnership

Bob Heuts
Director
Lee County
Economic Development

Macroeconomic Indicators

- 1) Employment
- 2) Unemployment
- 3) Aggregate wage
- 4) Median household income
- 5) Poverty
- 6) Gross domestic product
- 7) Tax base
- 8) Business start ups
- 9) Infant mortality rate
- 10) Graduation rate

Source: N.C. Employment Security Commission



THE
HEALTH
of LEE
COUNTY
2009

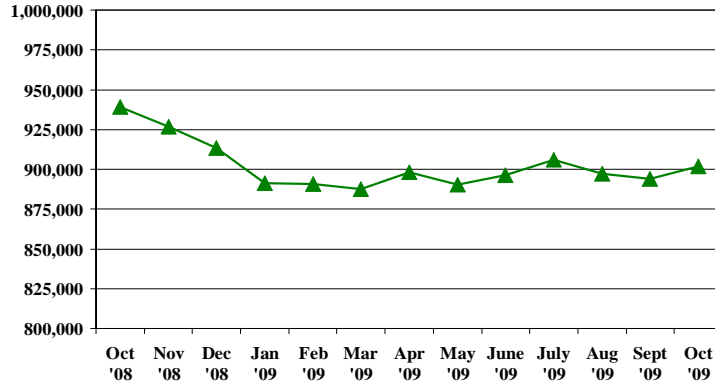


education crime income
labor economy quality of life
INDUSTRY the arts poverty
transportation retail sales

Charles Hayes
President & CEO
Research Triangle
Regional Partnership

Bob Heuts
Director
Lee County
Economic Development

Regional Employment



Source: N.C. Employment Security Commission

THE
HEALTH
of LEE
COUNTY
2009

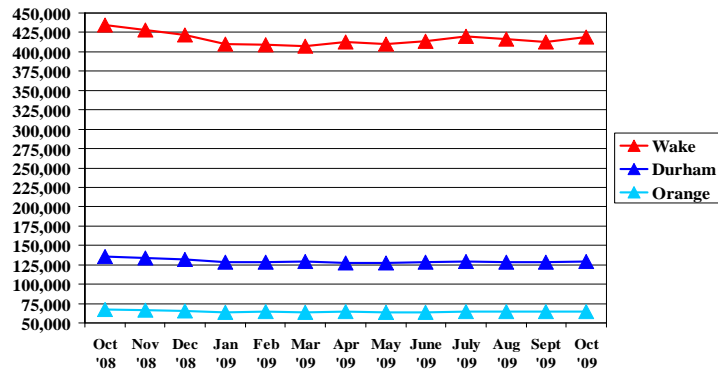


education crime income
labor economy quality of life
INDUSTRY the arts poverty
transportation retail sales

Charles Hayes
President & CEO
Research Triangle
Regional Partnership

Bob Heuts
Director
Lee County
Economic Development

County Employment (Urban Core)



Source: N.C. Employment Security Commission

THE
HEALTH
of LEE
COUNTY
2009

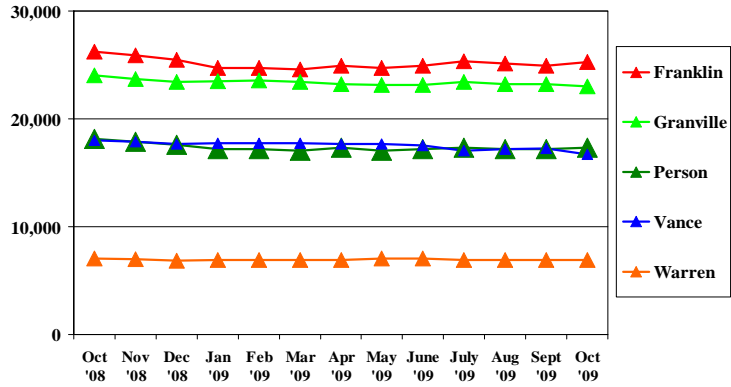


education crime income
labor economy quality of life
INDUSTRY the arts poverty
transportation retail sales

Charles Hayes
President & CEO
Research Triangle
Regional Partnership

Bob Heuts
Director
Lee County
Economic Development

County Employment (Northern Tier)



Source: N.C. Employment Security Commission

THE
HEALTH
of LEE
COUNTY
2009

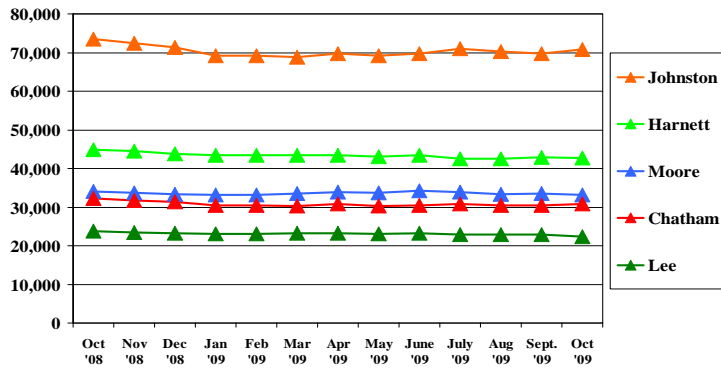


education crime income
labor economy quality of life
INDUSTRY the arts poverty
transportation retail sales

Charles Hayes
President & CEO
Research Triangle
Regional Partnership

Bob Heuts
Director
Lee County
Economic Development

County Employment (Southern Tier)



Source: N.C. Employment Security Commission

THE
HEALTH
of LEE
COUNTY
2009

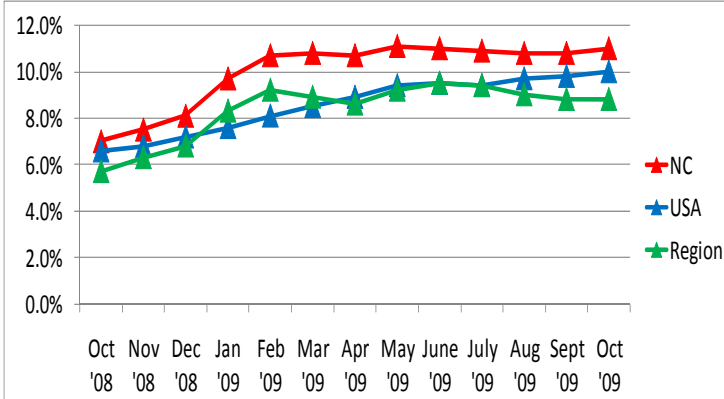


education crime income
labor economy quality of life
INDUSTRY the arts poverty
transportation retail sales

Charles Hayes
President & CEO
Research Triangle
Regional Partnership

Bob Heuts
Director
Lee County
Economic Development

% Regional Unemployment Rate



Source: N.C. Employment Security Commission

THE
HEALTH
of LEE
COUNTY
2009

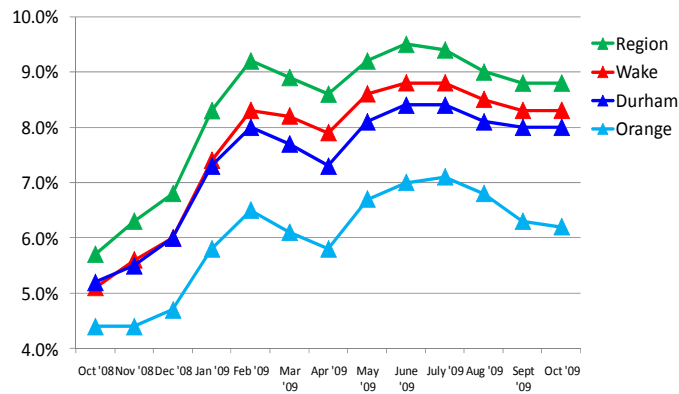


education crime income
labor economy quality of life
INDUSTRY the arts poverty
transportation retail sales

Charles Hayes
President & CEO
Research Triangle
Regional Partnership

Bob Heuts
Director
Lee County
Economic Development

% County Unemployment Rate (Urban Core)



Source: N.C. Employment Security Commission

THE
HEALTH
of LEE
COUNTY
2009

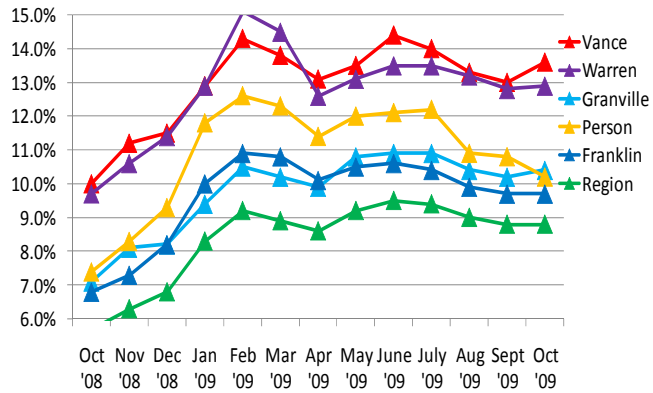


education crime income
labor economy quality of life
INDUSTRY the arts poverty
transportation retail sales

Charles Hayes
President & CEO
Research Triangle
Regional Partnership

Bob Heuts
Director
Lee County
Economic Development

% County Unemployment Rate (Northern Tier)



Source: N.C. Employment Security Commission

THE
HEALTH
of LEE
COUNTY
2009

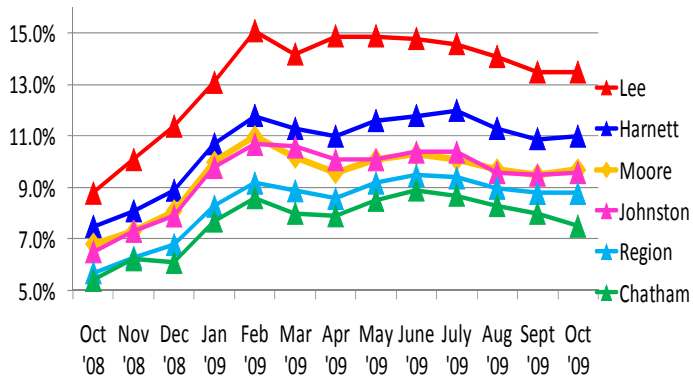


education crime income
labor economy quality of life
INDUSTRY the arts poverty
transportation retail sales

Charles Hayes
President & CEO
Research Triangle
Regional Partnership

Bob Heuts
Director
Lee County
Economic Development

% County Unemployment Rate (Southern Tier)



Source: N.C. Employment Security Commission

THE
HEALTH
of LEE
COUNTY
2009

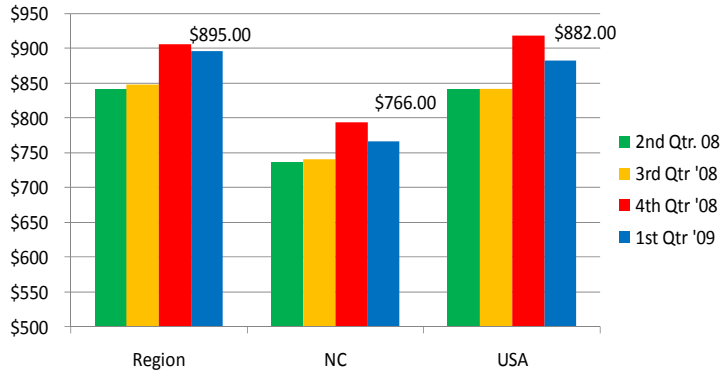


education crime income
labor economy quality of life
INDUSTRY the arts poverty
transportation retail sales

Charles Hayes
President & CEO
Research Triangle
Regional Partnership

Bob Heuts
Director
Lee County
Economic Development

Average Regional Weekly Wages



Source: N.C. Employment Security Commission (1st Qtr. 2009)

THE
HEALTH
of LEE
COUNTY
2009

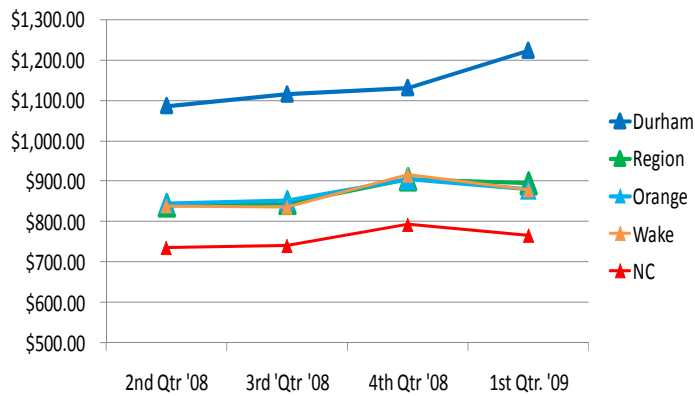


education crime income
labor economy quality of life
INDUSTRY the arts poverty
transportation retail sales

Charles Hayes
President & CEO
Research Triangle
Regional Partnership

Bob Heuts
Director
Lee County
Economic Development

Average County Wages (Urban Core)



Source: N.C. Employment Security Commission (1st Qtr. 2009)

THE
HEALTH
of LEE
COUNTY
2009

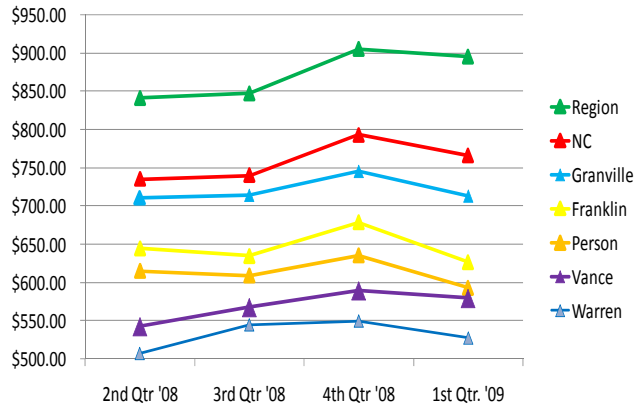


education crime income
labor economy quality of life
INDUSTRY the arts poverty
transportation retail sales

Charles Hayes
President & CEO
Research Triangle
Regional Partnership

Bob Heuts
Director
Lee County
Economic Development

Average County Wages (Northern Tier)



Source: N.C. Employment Security Commission (1st Qtr. 2009)

THE
HEALTH
of LEE
COUNTY
2009

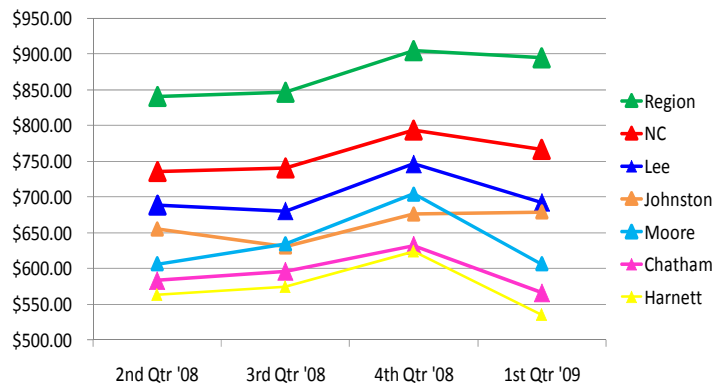


education crime income
labor economy quality of life
INDUSTRY the arts poverty
transportation retail sales

Charles Hayes
President & CEO
Research Triangle
Regional Partnership

Bob Heuts
Director
Lee County
Economic Development

Average County Wages (Southern Tier)



Source: N.C. Employment Security Commission (1st Qtr. 2009)

THE
HEALTH
of LEE
COUNTY
2009

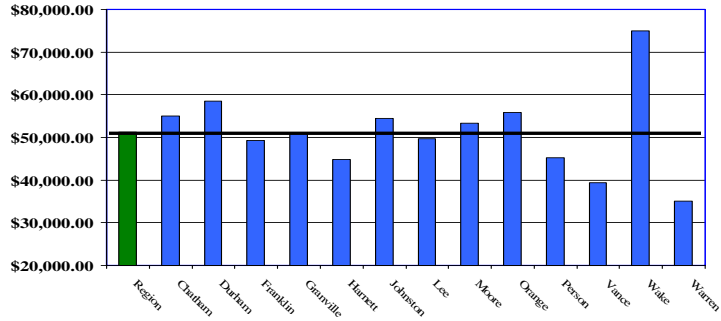


education crime income
labor economy quality of life
INDUSTRY the arts poverty
transportation retail sales

Charles Hayes
President & CEO
Research Triangle
Regional Partnership

Bob Heuts
Director
Lee County
Economic Development

Regional Median Household Income



Source: ESRI/Census (2008)

THE
HEALTH
of LEE
COUNTY
2009

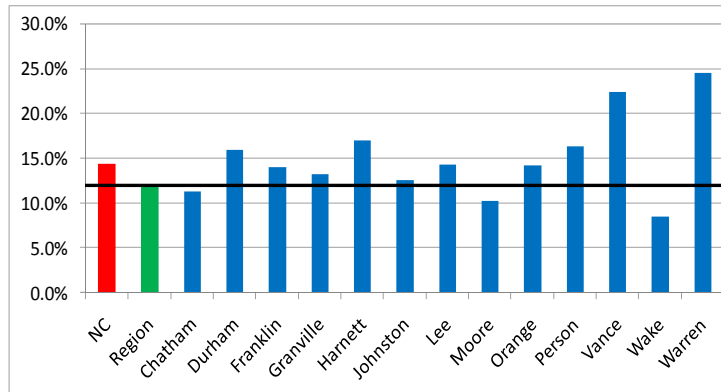


education crime income
labor economy quality of life
INDUSTRY the arts poverty
transportation retail sales

Charles Hayes
President & CEO
Research Triangle
Regional Partnership

Bob Heuts
Director
Lee County
Economic Development

Poverty Rate



Source: Census (2007) According to the US Census, in 2008, a family of four was considered "living in poverty" if their income was \$22,025.

THE
HEALTH
of LEE
COUNTY
2009

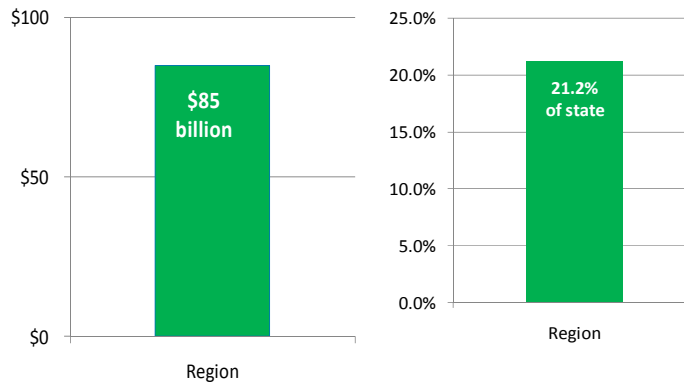
education crime income
labor economy quality of life
INDUSTRY the arts poverty
transportation retail sales

Charles Hayes
President & CEO
Research Triangle
Regional Partnership

Bob Heuts
Director
Lee County
Economic Development



Regional Gross Domestic Product



Source: U.S. Bureau of Economic Analysis (2008) – Combination of Raleigh-Cary and Durham MSAs

THE
HEALTH
of LEE
COUNTY
2009

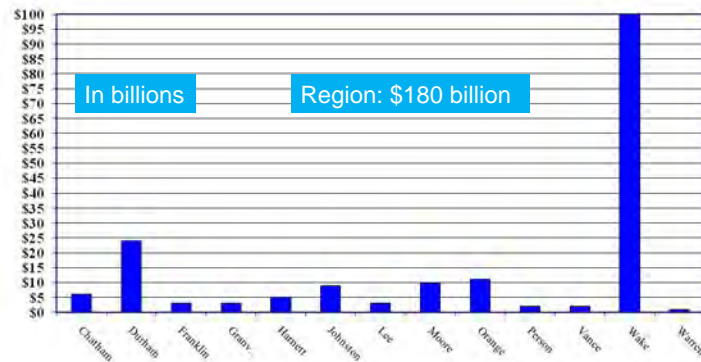
education crime income
labor economy quality of life
INDUSTRY the arts poverty
transportation retail sales

Charles Hayes
President & CEO
Research Triangle
Regional Partnership

Bob Heuts
Director
Lee County
Economic Development



County Tax Base



Source: N.C. Department of Revenue (2008-2009)

THE
HEALTH
of LEE
COUNTY
2009

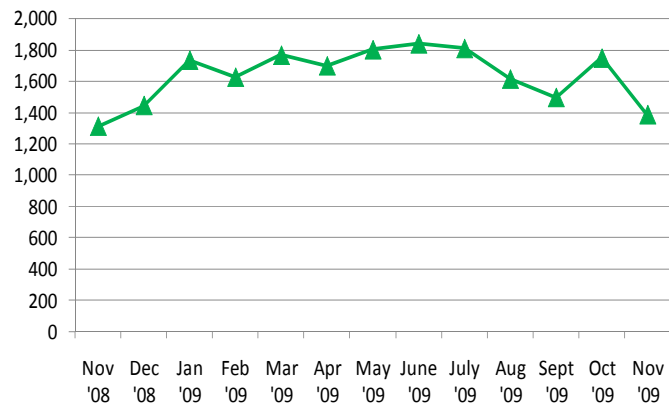


education crime income
labor economy quality of life
INDUSTRY the arts poverty
transportation retail sales

Charles Hayes
President & CEO
Research Triangle
Regional Partnership

Bob Heuts
Director
Lee County
Economic Development

Regional Business Startups



Source: NC Secretary of State

THE
HEALTH
of LEE
COUNTY
2009

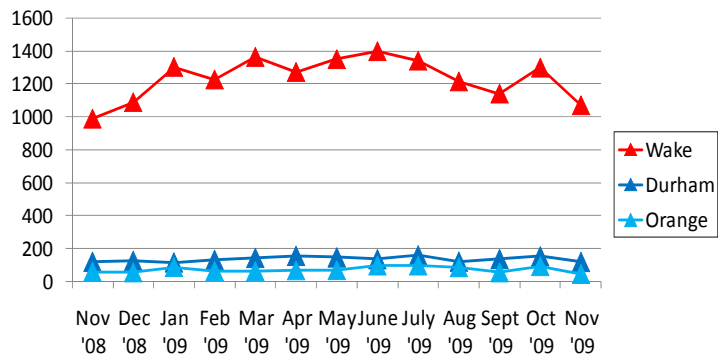


education crime income
labor economy quality of life
INDUSTRY the arts poverty
transportation retail sales

Charles Hayes
President & CEO
Research Triangle
Regional Partnership

Bob Heuts
Director
Lee County
Economic Development

Business Startups (Urban Core)



Source: NC Secretary of State

THE
HEALTH
of LEE
COUNTY
2009

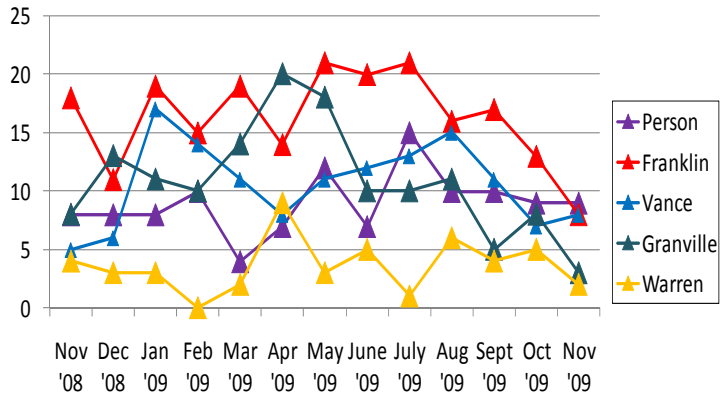


education crime income
labor economy quality of life
INDUSTRY the arts poverty
transportation retail sales

Charles Hayes
President & CEO
Research Triangle
Regional Partnership

Bob Heuts
Director
Lee County
Economic Development

Business Startups (Northern Tier)



Source: NC Secretary of State

THE
HEALTH
of LEE
COUNTY
2009

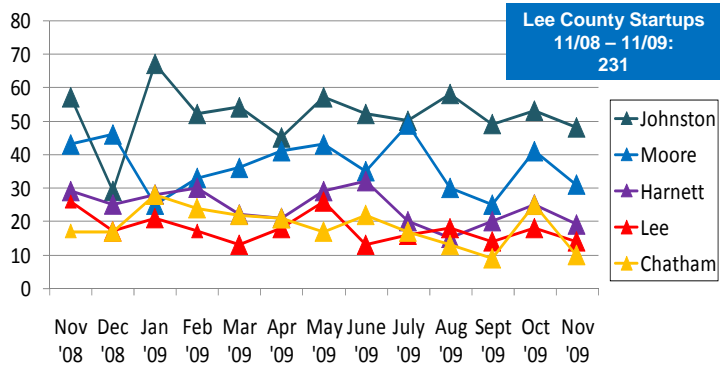


education crime income
labor economy quality of life
INDUSTRY the arts poverty
transportation retail sales

Charles Hayes
President & CEO
Research Triangle
Regional Partnership

Bob Heuts
Director
Lee County
Economic Development

Business Startups (Southern Tier)



Source: NC Secretary of State

THE
HEALTH
of LEE
COUNTY
2009

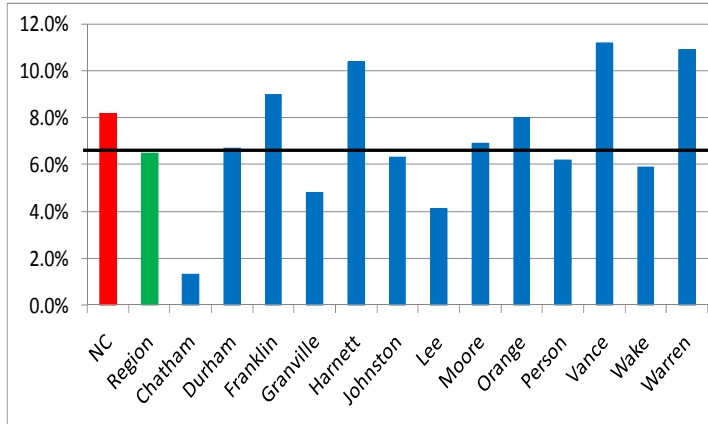


education crime income
labor economy quality of life
INDUSTRY the arts poverty
transportation retail sales

Charles Hayes
President & CEO
Research Triangle
Regional Partnership

Bob Heuts
Director
Lee County
Economic Development

Infant Mortality Rate



Source: NC Department of Health & Human Services State Center for Health Statistics (2008) (Infant mortality is reported by Mother's County of Residence - not county where the death occurred.)

THE
HEALTH
of LEE
COUNTY
2009

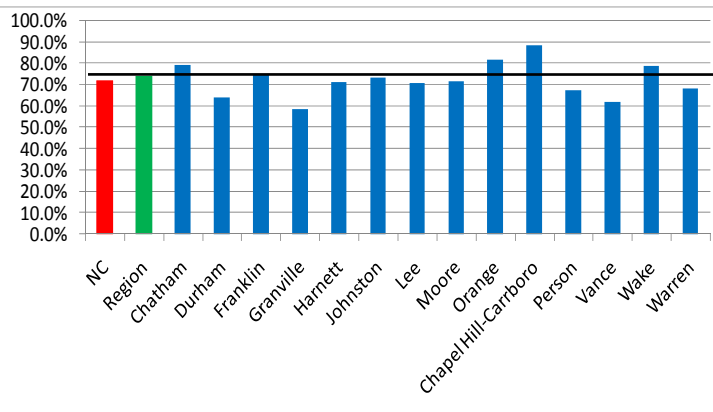


education crime income
labor economy quality of life
INDUSTRY the arts poverty
transportation retail sales

Charles Hayes
President & CEO
Research Triangle
Regional Partnership

Bob Heuts
Director
Lee County
Economic Development

High School Graduation Rate



Source: NC Public Schools (2008)